



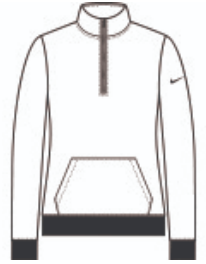
# Nike Women's Club Fleece Sleeve Swoosh 1/2-Zip

with versatility in mind, this brushed-back 1/2-zip has an elevated look which makes it perfect for work or play.

- 8.3-ounce, 80/20 cotton/polyester
- Zip-through collar
- Dyed-to-match zipper
- Front pouch pocket
- Rib knit cuffs and hem
- Contrast embroidered Swoosh logo on left sleeve

### CARE INSTRUCTIONS

Machine Wash Cold. Wash With Like Colors. Do Not Use Softeners. Remove Immediately. Do Not Allow To Lay On Itself When Wet. Do Not Bleach. Tumble Dry Low. Cool Iron. Do Not Dry Clean.

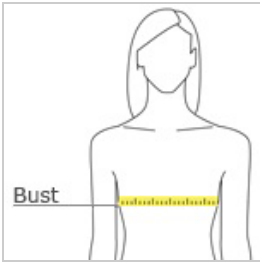


front



back

### HOW TO MEASURE



**BUST**  
Measure under the arm and around the fullest part of the bust with arms down, keeping tape horizontal.

### SIZE CHART

	S	M	L	XL	2XL		
Size	4/6	8/10	12/14	16/18	20/22		
Bust	32 1/2-35 1/2	35 1/2 - 38	38-41	41-44 1/2	44 1/2 - 48 1/2		

### COLOR INFORMATION

Please note: PMS code information is shown only when an exact match is available.



Anthracite  
PMS 432C



Black  
PMS BLACK C



Dark Grey Heather  
PMS 422C



Game Royal  
PMS 661C



Light Game  
Royal Heather  
PMS 7682C



Midnight Navy  
PMS 296C



White